



powered by



A Mountain Biker's Guide to The Mourne Mountains



A Mountain Biker's Guide to the Mourne Mountains

Whether you're coming to ride Castlewellan's fabulous cross-country trails or taking on Rostrevor's epic downhill runs, this MTB-Friendly Guide is packed full of pre and post ride ideas to help you make the most of your stay in the Mourne Mountains.

Written by mountain bikers for mountain bikers, you can find out where to grab the best Ulster Frys or carb-loaded packed lunches not to mention top class eateries and some favourite local watering holes.

With advice and recommendations on local bike shops and mountain bike friendly accommodation in and around the Castlewellan and Rostrevor Trails, this guide will also offer suggestions on other non-biking activities sure to hit the spot for those staying for a few days in this adventurer's paradise.

Check out [Visit Mourne Mountains](#) for a full list of activities on offer in the Mourne Mountains.

Rostrevor Mountain Bike Trails

"While it's a cliché to compare any old jump trail to Whistler's A-line ...Mega Mission is one of the few that earns this comparison."

MBR Magazine

Castlewellan Mountain Bike Trails

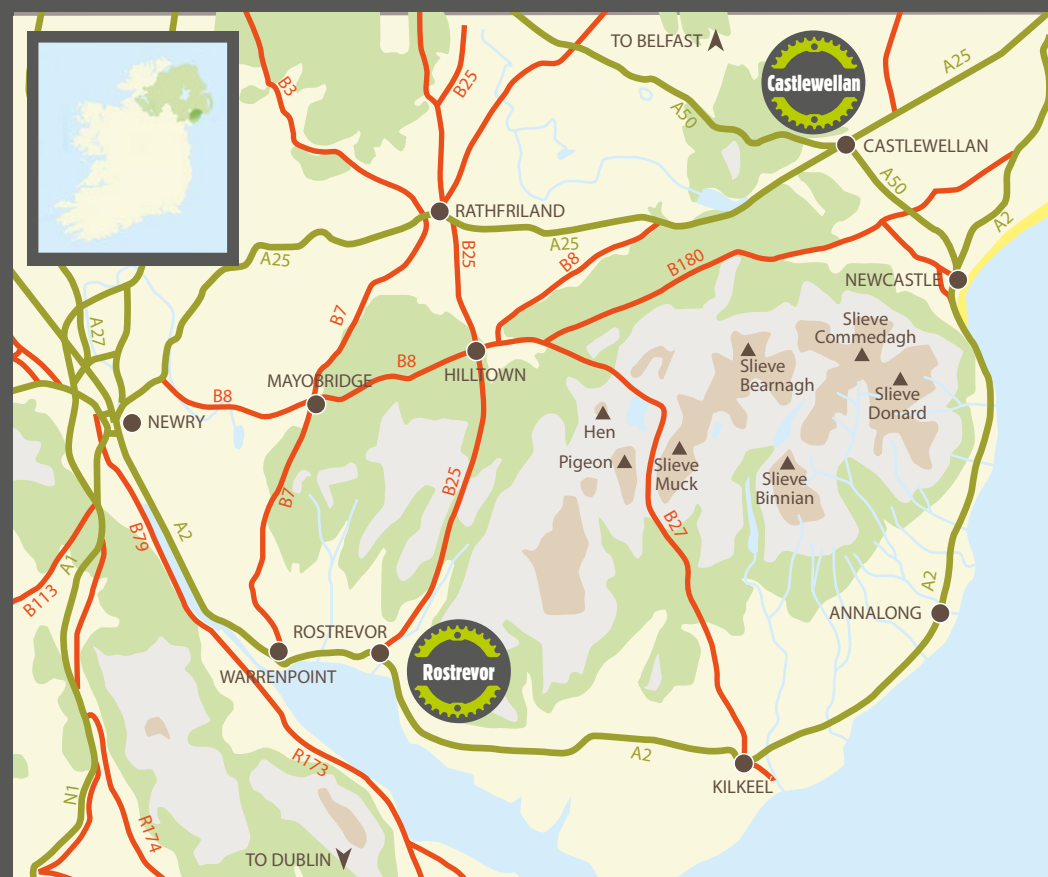
"A roller coaster ride of twisty, technical trails that just feel like they are happy to have you there."

Singletrack Magazine





MTB Trail Centres in the Mourne Mountains



Castlewellan Mountain Bike Trails

Castlewellan Forest Park boasts a stunning Victorian Castle, incredible panoramic views of the entire Mourne range and flowing singletrack set to blow you away; all just minutes from the lively village of Castlewellan. With green, blue and red grade trails (including black options) Castlewellan is a must-visit for mountain bikers of all ages and abilities.

Located at trailhead:

Life Adventure Centre offers bike hire, coaching, guiding, showers and changing facilities



Castlewellan

Castlewellan is a lively village with a rich history of traditional music where you can still catch a local 'session' taking place in a number of the pubs today. The centre of Castlewellan is only half a mile from the trailhead and is the perfect base for those looking to stay for a few days mountain biking.

Distance to Castlewellan MTB Trails – 0.5 miles | Distance to Rostrevor MTB Trails – 18 miles



Tips from the Locals

We know that when you're biking in a new place it is good to have a few local recommendations; so here are some of the top places to stay and eateries loved by local mountain bikers in and around Castlewellan.

Cool Café - Urban Coffee

Open from 8am this new café is the perfect spot to grab a healthy breakfast or full works Ulster Fry before your day on the trails. Take-away lunches including paninis and triple-decker sandwiches are also available.

Popular Pub - Maginns of Castlewellan

This family run pub is located approx 200 metres from the entrance to Castlewellan Forest Park, serves great locally sourced food and really livens up at the weekends. There is plenty of secure bike storage and a cloakroom for wet gear.

Great Guesthouse - Hillyard House

This 9 bedroom Inn is located close to the trails and offers a pantry service with coffee, homemade breads, soup and snacks served all day. With a friendly, welcoming atmosphere Hillyard House also hosts regular traditional music nights.

Turn to page 16 for a full list of MTB-Friendly places to eat, drink and stay near the Castlewellan Mountain Bike Trails.

Newcastle

Newcastle is one of the largest towns in the Mourne region and is located approximately 4 miles from Castlewellan and 20 miles from Rostrevor. Lying at the foot of Slieve Donard (Northern Ireland's highest peak) Newcastle is known as the Gateway to the Mourne and is the perfect base for outdoor enthusiasts visiting the area.

Distance to Castlewellan MTB Trails – 3.5 miles | Distance to Rostrevor MTB Trails – 19 miles



Tips from the Locals

A strong contender for mountain bikers looking for a larger buzz, Newcastle boasts loads of cool places to eat and drink with a number of hotels, hostels, guesthouses and B&B's to suit every budget. Here are just some of our favourites below.

Delightful Deli – Sea Salt

Located on Central Promenade, this popular little delicatessen and bistro serves delicious homemade food including seafood chowder, paninis and lasagne. Here you can also enjoy a fabulous outlook over Newcastle Beach with your food.

Homely Hotel – The Burrendale Hotel

For those after a bit more luxury, The Burrendale ticks all the right boxes. The use of their heated pool, sauna, steam room, jacuzzi and spa isn't a bad way to soothe the old muscles after a day on the trails. This four star hotel also offers secure bike storage, washing facilities with a separate 'mud-friendly' entrance for bikers.

Hip Hostel – Hutt Hostel

This new hostel is specifically geared up to meet the needs of people who love the outdoors. There is always a warm, welcoming atmosphere and all the MTB-friendly facilities you could ever need including bike wash, secure bike storage, laundry and drying facilities.

Turn to page 16 for a full list of MTB-Friendly places to eat, drink and stay near the Castlewellan Mountain Bike Trails.



Rostrevor Mountain Bike Trails

On the shores of Carlingford Lough, the Rostrevor Mountain Bike Trails offer some challenging mountain biking where efforts are rewarded with incredible coastal views and exhilarating singletrack descents. When you add not just one but two purpose-built downhill trails to the mix, there's no denying it... Rostrevor is a mountain bikers' haven!

Trailhead Provider:

East Coast Adventure offer bike hire, coaching and an uplift service for these trails.

27km
 19km
 Downhill x2

Rostrevor

Rostrevor is a small coastal village on the shores of Carlingford Lough. With narrow streets, independent cafés and traditional pubs it is hard not to get caught up in the whole village atmosphere. Under a mile from the Rostrevor trailhead in Kilbroney Park, the village is an obvious choice for visiting mountain bikers.

Distance to Rostrevor MTB Trails – 0.5 miles | Distance to Castlewellan MTB Trails – 17 miles



Tips from the Locals

The Rostrevor Trails offer some challenging mountain biking so large portions of hearty grub are an absolute must. The locals also know how to enjoy themselves in the evening so here are some top picks of places to eat, drink and sleep in Rostrevor.

Cool Café – The Old School House

With a choice of full Ulster fry-ups, pancakes or smoked salmon and scrambled eggs, The Old School House is a 'must-visit' before the trails. Their homemade School House Burger is a great shout in the evenings.

Popular Pub – Kilbroney Bar & Restaurant

This welcoming pub is a great spot to replenish spent energy after a hard day on the Rostrevor Trails. Delicious steaks washed down with a few pints are hard to beat at The Kilbroney Bar. They also offer take-away lunches for long days out on the trails.

Superb Self-Catering – Rostrevor Holidays

These family-run self-catering cottages are owned by local mountain bikers and offer state of the art bike storage, washing and drying facilities as well as a bike wash on site. They also offer introductory MTB lessons on the trails for absolute beginners.

Turn to page 17 for a full list of MTB-Friendly places to eat, drink and stay near the Rostrevor Mountain Bike Trails. Mountains.

Warrenpoint

A little over 2 miles from the Rostrevor Trails, Warrenpoint is a lively town, popular with visiting mountain bikers looking for a wider choice of accommodation options, restaurants and pubs. Warrenpoint comes to life in the summer months with a whole host of festivals and events including the renowned Guinness Blues on the Bay Festival in May.

Distance to Rostrevor MTB Trails – 3 miles | Distance to Castlewellaan MTB Trails – 19 miles



Tips from the Locals

Warrenpoint is a great base for mountain bikers wanting to be riding distance from the Rostrevor Trails but with a wide choice of cafés, restaurants, pubs and nightclubs right on your doorstep. Check out some local favourites below.

Cool Café – Fulla Beans Coffee & Food Bar

This family run café offers an extensive menu with everything from delicious breakfast baps to healthy soups, bagels and wraps not to mention gourmet burgers, always a hit with local mountain bikers. The staff are full of knowledge on the Rostrevor Trails and with helmet racks and puncture repair kits also available on request, this is a great MTB-friendly café.

Renowned Restaurant - Fusion

Husband and wife team, Mark and Patrice O’Kane run this gem of a restaurant on Duke Street in Warrenpoint. With a relaxed wine bar feel, fabulous food and welcoming staff, Fusion is the perfect setting for an evening meal with friends or family.

Popular Pub – The Duke

The Duke is first and foremost a well loved seafood restaurant in Warrenpoint however it also offers a friendly pub and beer garden for kicking back in the late summer evenings.

Homely Hotel – The Whistledown Hotel

Located on the seafront, this independently run hotel boasts two popular restaurants and two lively bars with full cocktail menus and Prosecco on tap! All guest rooms are en-suite with free use of an outdoor bike wash and secure overnight bike storage during your stay.

Turn to page 17 for a full list of MTB-Friendly places to eat, drink and stay near the Rostrevor Mountain Bike Trails.



Camping in the Mourne Mountains

Castlewellaan Forest Park - 0.1 miles from Castlewellaan / 18 miles from Rostrevor

Open from March to October each year, this caravan and camping site is situated at the trailhead to the Castlewellaan Mountain Bike Trails and offers a host of mountain bike friendly facilities including modern toilets and showers, fresh water supply, chemical toilet disposal point and electricity hook up for caravans.

Tollymore Forest Park - 9 miles from Castlewellaan / 18 miles from Rostrevor

This popular caravan and camp site is located 9 miles from the Castlewellaan Mountain Bike Trails in the stunning surroundings of Tollymore Forest Park. Open all year round, this large site also offers toilets, showers, fresh water, chemical toilet disposal point and electricity hook ups.

Kilbroney Caravan & Camping Park - 0.1 miles from Rostrevor / 18 miles from Castlewellaan

Located 150m from the Rostrevor trailhead, Kilbroney Caravan and Camping Park is an ideal location for those looking to ride the Rostrevor Mountain Bike Trails. There is a cafe on site, washing/drying facilities available and hot showers all day.

Chestnutt Holiday Parks - 8 miles from Rostrevor / 20 miles from Castlewellaan

Located in Cranfield, approx 15 mins from Rostrevor and 35 mins from Castlewellaan, the five star Chestnutt Holiday Parks accommodate campers, motor homes and tourers as well as a number of holiday homes (6 people) available to hire. There is also a café on site offering breakfast, lunch and dinner as well as a takeaway menu for food out on the trails.

When camping we encourage mountain bikers to always adhere to the principles of Leave No Trace.

Visit [Leave No Trace Ireland](#) for more information.

Bike Shops/Bike Hire in the Mourne Mountains

We know too well that no matter how prepared you think you are it is always useful to know where the nearest bike shop is for emergencies. So whether you are after a few spares, need a full overhaul or even just want to call in for some first hand knowledge of the local trails, here is a list of some bike shops in and around the Mourne Mountains. We have also listed some Bike Hire Providers as well as Tuition & Guiding Services in the Mourne Mountains.

BIKE SHOPS

Green Bikes - Newry

Green Bikes has been a leading retailer and repair centre in Newry for the last 10 years. Whether you are a seasoned pro or a weekend trail rider the team at Green Bikes will have the expertise and knowledge to help you.

Halfords - Newry

Located on the Armagh Road in Newry, this Halfords store offers a range of service options including sales and repair of complete bikes, brakes, wheels, suspension and gears.

Ross Cycles - Castlewellan

This long established bike repair service in Castlewellan has experience in repairing mountain bikes, road bikes and hybrids as well as offering good value bike rental.

Mourne Cycles - Newcastle

Located on the Dundrum Road in Newcastle (5 miles from the Castlewellan Mountain Bike Trails), Mourne Cycles has a great reputation for both road and mountain bike repair.

BIKE HIRE, TUITION AND GUIDING SERVICES

East Coast Adventure

Rostrevor's official trailhead provider is located in the main car park and offers bike repair, spares, half day/full day bike rental, coaching/guiding and daily uplift service.

Life Adventure Centre

Located at the trailhead in Castlewellan Forest Park, Life Adventure Centre offers bike hire, coaching, guiding and basic bike repair. There are showers and changing facilities on site.

Clearsky Adventure Centre

Clearsky Adventure Centre boasts a brand new fleet of top quality mountain bikes available to hire. With disc brakes and front suspension, these bikes are perfect for the Castlewellan Mountain Bike Trails.

Cloughmor Extreme

Cloughmor Extreme offer a wide range of mountain bike skills courses and guiding on the Rostrevor Mountain Bike Trails

FirstTracksMTB.com

FirstTracksMTB.com by Glyn O'Brien provides a bike hire service within the Newry & Mourne area offering high quality Vitus mountain bikes. Professional Coaching and Guiding Services also available.

Mourne Bikes

Mourne Bikes provides a professional and friendly bike hire service within the Mournes offering high quality CUBE mountain, touring and kid's bikes. Tuition and Guiding Services also available.

Outdoor Concepts

Outdoor Concepts offer a comprehensive range of 29er hardtails and full suspension bikes from 15" to 21" frame sizes catering for mountain bikers from 11 years old upwards.

Summit Mountain Biking

Summit Mountain Biking offer a range of mountain bike courses, tours and guiding services throughout Northern Ireland as well as some great value bike maintenance courses.

Visit www.MountainBikeNI.com for a full list of bike shops, tuition & guiding services and bike hire providers across Northern Ireland.



Other things to do in the Mourne Mountains

Whilst mountain biking may be the main focus of your trip to the Mournes we know that most of you will probably also want to explore a little during your stay. Check out some of our ideas for other quirky things to do in the Mourne Mountains.

Soak Seaweed Baths, Newcastle

This multi award winning alternative seaweed bath house and spa is the perfect place to relax and unwind after a tough day on the trails. Located on the seafront in Newcastle, Soak offers a place to be spoiled in silky hot seaweed baths or enjoy rejuvenating spa treatments. Open all year round, there is a small café and even some self-catering apartments if you fancy basing yourself here.

Mourne Seafood Cookery School, Kilkeel

The harbour town of Kilkeel is famed for its fabulous seafood and the Mourne Seafood Cookery School, located in the Nautilus Centre, is the place to learn the art of seafood cuisine from highly skilled professional chefs. Find out all about how fish are caught, filleted, handled and cooked, then serve up and enjoy your own meal on one of their popular culinary courses.

Whitewater Brewery Tour, Kilkeel

All fans of real ale and locally brewed lagers should not miss a trip to Whitewater, one of Northern Ireland's most loved microbreweries. Also located in Kilkeel, Whitewater produce handcrafted beers from the finest ingredients with no additives and a tour of the brewery will teach you the various processes each bottle goes through before ending up in pubs and bars across Northern Ireland.

Check out **Visit Mourne Mountains** for a comprehensive list of other things to do during your stay in the Mourne Mountains.

The Mourne Mountains: Northern Ireland's Outdoor Hub

The Mourne Mountains are quite simply an adventurer's paradise. Boasting Northern Ireland's largest mountain range, this whole region has long been associated with outdoor activities both on land and water. With such a wide variety of outdoor pursuits on offer it is easy to see why activity enthusiasts flock to the Mourne Mountains all year round. Check out some top outdoor activity ideas in the Mourne Mountains below.

Family and Road Cycling

If you're just mad keen on two wheels then you might want to check out some of the long established on road and off road cycling routes in the Mourne Mountains. This area is hugely popular with club runs and boasts some sharp climbs and long steady descents. There are a whole host of short, medium and long distance rural road routes near both the Castlewellsan and Rostrevor Mountain Bike Trails just waiting to be enjoyed.

Hill Walking

The Mourne Mountains are amongst the most dramatic ranges in Ireland with its summits crowned by large granite tors. The entire range is criss-crossed by an extensive network of paths and tracks, providing walkers with incredible opportunities for exploration. Visit www.WalkNI.com for a comprehensive list of walking route descriptions, maps and photos of the Mourne Mountains.

Climbing

If walking the summits of the Mourne Mountains seems a bit tame maybe you would prefer to check out some of the crags and high tors found dotted all across this spectacular range. Inexperienced climbers should book a session with an instructor before tackling any of the Mourne Mountains' climbing routes on their own.

Sea Kayaking

The rugged coastline around the Mourne Mountains is spectacular from all angles however it is arguably best experienced from the sea. The South East Coast Sea Kayak Trail stretches more than 50 nautical miles from Strangford Lough to Carlingford Lough and boasts rocky coves and long sandy beaches. Most of this trail will suit kayakers of all abilities however there are some challenging sections so we would advise you to contact a local guide before heading out on this trail.

Coasteering/Bouldering

If throwing yourself off 20ft sea cliffs or scrambling up fast flowing rivers sounds up your street then you will love coasteering or bouldering in the Mourne Mountains. There are a number of experienced outdoor activity providers who know the best routes for this adrenaline activity in the Mourne Mountains and don't worry if you are an absolute beginner, you can start off on easy jumps/climbs and build up to the bigger ones once you gain confidence!

Visit OutdoorNI.com for a whole host of other activity ideas to try out during your stay in the Mourne Mountains.

Getting to the Mourne Mountains

With airports expanding and increased investment in road infrastructure in Ireland the Mourne Mountains have never been more accessible. Below is some further information on travelling to the Mourne Mountains from both Great Britain and the Republic of Ireland.

Travelling From Great Britain

By Plane

Scheduled air services operate to the George Best Belfast City Airport, Belfast International Airport and Dublin International Airport from most other major UK airports.

Airport	Distance to Castlewellsan	Distance to Rostrevor
George Best Belfast City Airport	36 miles (58km)	50 miles (80km)
Belfast International Airport	39 miles (63km)	56 miles (90km)
Dublin International Airport	82 miles (132km)	69 miles (111km)

By Ferry

Northern Ireland has first-class ferry connections with Scotland, England and the Isle of Man. See table below for more details.

Crossing	Ferry Operator	Distance to Castlewellsan	Distance to Rostrevor
Cairnryan to Belfast	Stena Line	36 miles (58 km)	50 miles (80km)
Liverpool to Belfast	Stena Line	36 miles (58 km)	50 miles (80km)
Holyhead to Dublin	Irish Ferries	88 miles (142 km)	74 miles (119km)
Holyhead to Dun Laoghaire	Stena Line	101 miles (163km)	80 miles (129km)
Cairnryan to Larne	P&O Ferries	54 miles (87 km)	69 miles (111 km)
Troon to Larne	P&O Ferries	54 miles (87 km)	69 miles (111 km)
Liverpool to Dublin	P&O Ferries	88 miles (142 km)	74 miles (119km)

Driving Directions

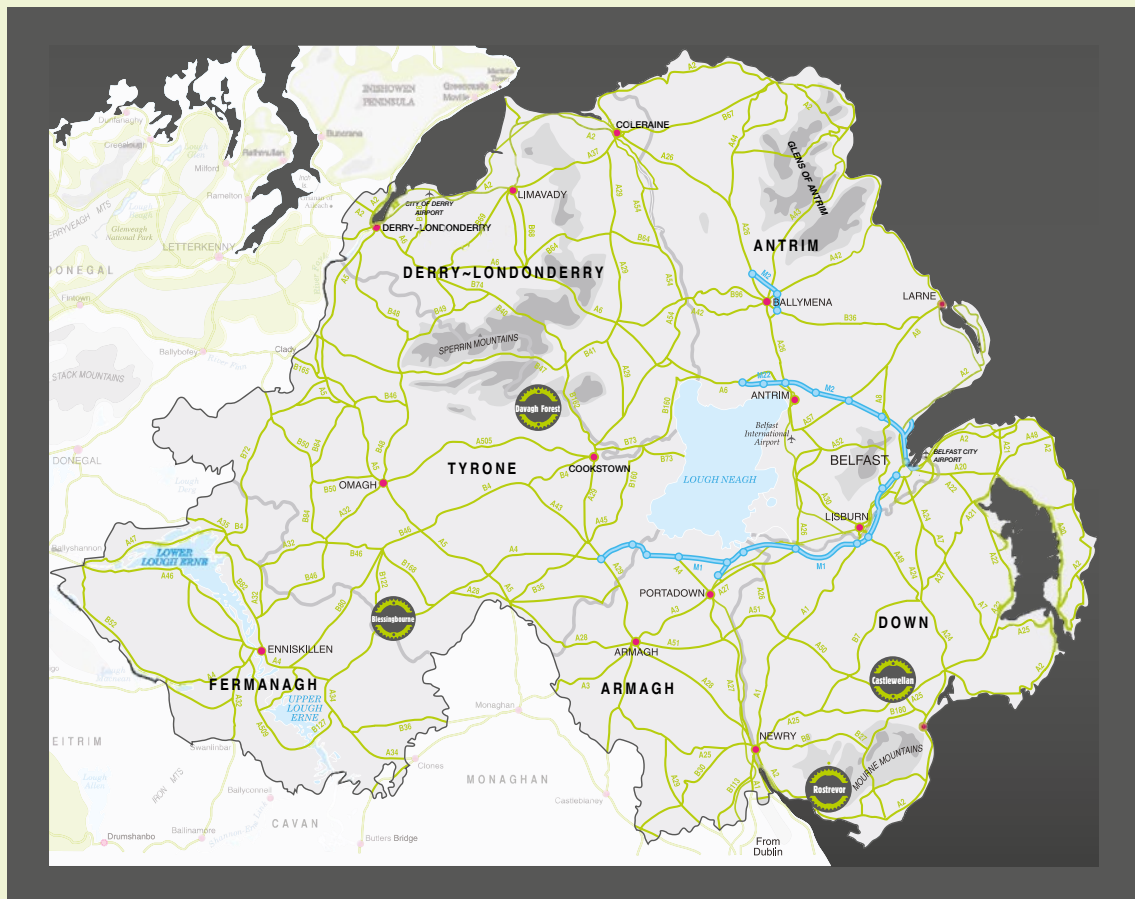
If you are travelling to the Mourne Mountains by car take the M1 (north from Dublin/south from Belfast) and either turn off at Newry to follow the A2 to Warrenpoint/Rostrevor or turn off at the junction with the A25 where you can follow directions for Rathfriland/Castlewellsan. Your trip from Belfast should take just over an hour with travel time from Dublin no more than two hours.

Travelling from the Republic of Ireland By Train and/or Bus

There is one main train line linking Belfast with Dublin and this service stops at Newry, about 10 miles from Rostrevor. Mountain Bikes are carried for free on all Translink buses and Goldline Express coaches however no bikes will be carried before 09:30 and space is restricted to 2 full-sized bikes, allocated on a first come, first served basis. Some conditions apply to this service. For more info on travelling by both bus and train download the Bike It with Translink leaflet or call +44 (0)28 9066 6630.

Other MTB Destinations in Northern Ireland

Northern Ireland boasts over 100km of sustainable mountain bike trails designed to challenge and reward riders of all ages and abilities. With incredible natural landscapes as their canvas, world renowned MTB experts have created purpose-built trails guaranteed to get your adrenaline pumping.



Davagh Forest Trails

● 3km ■ 7.5km ▲ 16km

Davagh Forest is located in the stunning Sperrin Mountains and offers exciting cross-country trails with a number of hair raising rock features thrown in for good measure. With the choice of gentler green and blue circular trails, Davagh Forest has it all.



Blessingbourne Trails

■ 6km ▲ 6km

Blessingbourne is the perfect spot for families and those just getting into mountain biking. The main blue trail is packed full of fun technical trail features, whilst the red skills loops and pump track will suit more experienced riders looking to fine tune their MTB techniques.



Barnett Demesne Trails & Jumps Park

● 3.4km ■ 3.9km ▲ 1.5km

On the outskirts of Belfast, the Barnett Demesne Trails offer mountain biking to suit all ages and abilities and with Ireland's first official purpose-built jumps park boasting no less than 6 lines of mouth-watering table-tops, doubles and hip jumps, this compact trail centre ticks all the right boxes!



Tollymore MTB Skills Course

This purpose-built mountain bike skills course at Tollymore National Outdoor Centre is 1.5km long and perfect for those looking to fine tune their mountain bike techniques on a wide range of technical trail features. With rollers, berms, drop offs, table tops, rock sections, northshore and log rolls there are plenty of opportunities for all bikers to develop their riding and concentrate on specific skills in a progressive manner.



Contact Page: Castlewellaan

Full list of MTB-Friendly cafes, pubs, restaurants, hotels, hostels, B&B's and self-catering accommodation options near the **Castlewellaan Mountain Bike Trails**

Activity Centre	Address	Town	Phone Number
Tollymore National Outdoor Centre	Hilltown Road	Bryansford	028 4372 2158

Cafes

Urban Coffee	74 Main Street	Castlewellaan	028 4321 8029
Sea Salt	51 Central Promenade	Newcastle	028 4372 5027
Life Adventure Centre	Castlewellaan Forest Park	Castlewellaan	028 4377 0714
The Tea Rooms	1-5 Castle Avenue	Castlewellaan	028 4372 6002
Coffee Dock	37 Main St	Castlewellaan	028 4377 1741

Restaurants

Mourne Seafood Bar	Main Street	Dundrum	028 4375 1377
--------------------	-------------	---------	---------------

Bars

Maginns of Castlewellaan	9-11 Main St	Castlewellaan	028 4377 8235
The Kings Inn	28-30 Lower Square	Castlewellaan	028 4377 8247

Hostel

Hutt Hostel	30 Downs Road	Newcastle	028 4372 2133
Life Adventure Hostel	Cornmill Quay	Annalong	028 4377 0714

Hotels

Kings Inn	28-30 Lower Square	Castlewellaan	028 4377 8247
The Burrendale Hotel	51 Castlewellaan Rd	Newcastle	028 4372 2599
Downshire Arms Hotel	Main Street	Newry	028 4063 8899

B&Bs

Ballyrone Cottage B&B	40 Lacken Road	Rathfriland	077 5409 1772
Guinness House	31 Guinness Rd	Ballynahinch	028 9756 0206
Hillyard House	1-5 Castle Avenue	Castlewellaan	028 4377 1999
Amble In	14 Bryansford Gardens	Newcastle	028 4372 4552
Ilex House	19A Drumarkin Road	Rathfriland	077 0889 9982
Leigh House	55 Drumarkin Rd	Rathfriland	028 4063 0673

Self-Catering

Downshire Arms Chalets	Main Street	Hilltown	028 4063 8899
The Hill Cottage	32 Jericho Road	Killyleagh	028 4482 8245
Snooze Apartments	7C South Promenade	Newcastle	028 4372 6002

Contact Page: Castlewellaan cont.

Full list of MTB-Friendly cafes, pubs, restaurants, hotels, hostels, B&B's and self-catering accommodation options near the **Castlewellaan Mountain Bike Trails**

Self-Catering	Address	Town	Phone Number
Tory Bush Cottages	79 Tullyree Road	Kilcoo	028 4372 4348
Graceys Barn	35 Tamary Hill	Newry	079 2112 2834
Rathmourne Self Catering	14 Lackan Road	Ballyroney	028 4063 0364

Caravan & Camp sites

Castlewellaan Forest Park	Castlewellaan Forest Park	Castlewellaan	028 4377 8664
Chestnutt Holiday Parks	3 Grange Road	Cranfield	028 4176 2653
Tollymore Forest Park	Bryansford Road	Newcastle	028 4372 2428



Contact Page: Rostrevor

Full list of MTB-Friendly cafes, pubs, restaurants, hotels, hostels, B&B's and self-catering accommodation options near the **Rostrevor Mountain Bike Trails**

Activity Centre	Address	Town	Phone Number
Tollymore National Outdoor Centre	Hilltown Road	Bryansford	028 4372 2158

Cafes

Kilbroney Park Cafe	Shore Rd	Rostrevor	079 2146 4589
The Old School House	39 Church Street	Rostrevor	028 4173 8211
Well Fit Café	11d Old Warrenpoint Rd	Newry	028 3026 1155
Fulla Beans Coffee & Food Bar	1 Church St / Duke St	Warrenpoint	028 4177 2317

Restaurants

The Kilbroney Bar & Restaurant	31 Church St	Rostrevor	028 4173 8390
Fusion	4 Duke st	Newry	028 4175 4292

Bars

The Duke	7 Duke St	Newry	028 4175 3149
----------	-----------	-------	---------------

Hotels

The Whistledown Hotel	6 Radharc na Mara	Warrenpoint	028 4175 4174
Balmoral Hotel	13 Seaview	Warrenpoint	028 4175 4093
Canal Court Hotel	Merchants Quay	Newry	028 3025 1234

Hostels

Life Adventure Hostel	Cornmill Quay	Annalong	028 4377 0714
The Mourne Lodge	Bog Road	Kilkeel	028 4176 5859
Rostrevor Youth Centre	10 Warrenpoint Road	Rostrevor	079 2797 1257
East Coast Adventure Centre	Lower Knockbarragh Rd	Rostrevor	028 4175 3535

B&Bs

Lismore House	118 Quarry Lane. Dublin Rd	Newry	028 3026 1984
Marymount	Windsor Avenue	Newry	028 3026 1099
Meadowlea	25 Drumsesk Rd	Rostrevor	028 4173 9810
Mourne Wood	19 Mourne Wood, Kilbroney Rd	Rostrevor	077 8626 8605
Ross House	6 Pine Valley	Rostrevor	078 3489 9926
The Oystercatcher	2 Victoria Square	Rostrevor	028 4173 9999
The Sands	4 Victoria Square	Newry	028 4173 8151
Firtrees	16 Killowen Old Road	Rostrevor	028 4173 8602

Contact Page: Rostrevor cont.

Full list of MTB-Friendly cafes, pubs, restaurants, hotels, hostels, B&B's and self-catering accommodation options near the **Rostrevor Mountain Bike Trails**

B&Bs	Address	Town	Phone Number
Cranmore House	163 Newcastle Road	Kilkeel	028 4176 2021
Hillview House	18 Bog Road	Atticall	028 4176 4269
Iona Farmhouse	161 Newcastle Road	Kilkeel	028 4176 2021

Self-Catering

Hanna's Close	Aughnahoor Road	Kilkeel	028 4176 5999
Grange Cottage	12a Grange Road	Kilkeel	077 1426 1889
Hillview Chalet	18 Attical Bog Rd	Kilkeel	028 4176 4269
The Hill Cottage	32 Jericho Rd	Killyleagh	028 4482 8245
The Mourne Country Lodge	2B Crossan Road	Mayobridge	078 8696 7939
Rostrevor Holidays	Kilbroney Rd	Rostrevor	028 4173 8727
Spelga House	91 Kilkeel Road	Hilltown	077 2043 2781
30 Water Street	30 Water Street	Rostrevor	077 1662 5492
Fairy Glen Cottage	9 Syenite Place	Rostrevor	00 31 6 4080 8647
Kilbroney Court	2-4 Greenpark Road	Rostrevor,	077 4528 7523
Seamourne	28 Drumsesk Place	Warrenpoint	077 8443 5796
Dolly's Cottage	Radharc na Mara	Newry	028 4177 3669
The Haven Rostrevor	17 Newtown Rd	Rostrevor	028 4177 2021
Crotlieve Barn	72a Newtown Road	Rostrevor	028 4173 8868
An Radhairc	35 Cloughmore Park	Rostrevor	00 353 4785 951
Ballynahatten Cottages	3 Cranfield Road	Kilkeel	028 4176 4359
Graceys Barn	35 Tamary Hill	Newry	079 2112 2834
Teach Neid House	16A Ryan Road	Mayobridge	028 3085 1506
Dunnywater Lodge	252 Head Road	Annalong	079 7157 0477
Downshire Arms Chalets	Main Street	Hilltown	028 4063 8899

Guesthouse

The Lough and Quay	3 Marine Parade	Warrenpoint	028 4175 2082
--------------------	-----------------	-------------	---------------

Caravan & Camp sites

Chestnutt Holiday Parks	3 Grange Road	Cranfield	028 4176 2653
Kilbroney Caravan and Camping Park	Shore Rd	Rostrevor	028 4173 8134

MountainBikeNI.com has provided the information and images in this booklet. Every care has been taken to ensure accuracy of the information. MountainBikeNI.com, however, cannot accept responsibility for errors or omissions but where such are brought to our attention, the information for future publications will be amended accordingly.

If you have any comments or queries regarding this Mountain Biker's Guide or require the Guide in an alternative format please contact:

MountainBikeNI.com

The Stableyard, Malone Road, Barnett Demesne, Belfast BT9 5PB

Tel: +44 (0)28 9030 3930

Email: info@mountainbikeni.com

Design by www.thinkstudio.co.uk

